

# EXISTING CONDITIONS REPORT

DESIGN AND ENGINEERING CONSULTANT SERVICES  
FOR A SAFE STREETS FOR ALL (SS4A) ACTION PLAN

CONTRACT NO. 23-0116-5

FOR

CHATHAM COUNTY  
BOARD OF COMMISSIONERS



Prepared by:  
BCC Engineering, LLC d/b/a Heath & Lineback  
6001 Chatham Center Dr. STE 380  
Savannah, GA 31405

June 2024

## TABLE OF CONTENTS

1. INTRODUCTION .....	1
2. HISTORICAL TRENDS .....	3
3. KSI CRASH ANALYSIS .....	4
Pedestrian and Bicycle Crashes .....	4
Distracted Driver Crashes .....	8
Motorcycle Crashes.....	10
Single Motor Vehicle Crashes .....	12
Impaired Driver Crashes .....	14
Large Truck Crashes .....	16
Intersection Crashes .....	18
4. KSI SAFETY ANALYSIS .....	21
5. ON-GOING PROJECTS .....	31

## LIST OF TABLES

Table 1 – Crashes by Year and Severity.....	3
Table 2 – Crashes by Year and Type.....	3

## LIST OF FIGURES

Figure 1 – Map of Unincorporated Chatham County .....	2
Figure 2 – Pedestrian KSI Crashes .....	5
Figure 3 – Bicycle KSI Crashes.....	7
Figure 4 – Distracted Driver KSI Crashes .....	9
Figure 5 – Motorcycle KSI Crashes.....	11
Figure 6 – Single Motor Vehicle KSI Crashes .....	13
Figure 7 – Impaired Driver KSI Crashes .....	15
Figure 8 – Large Truck KSI Crashes .....	17
Figure 9 – Intersection KSI Crashes .....	19
Figure 10 – Intersection KSI Crash Rates.....	22
Figure 11 – Segment KSI Crash Rates .....	23
Figure 12 – Segment KSI Crash Rates (continued).....	24
Figure 13 – Intersection KSI Crash Rates – Re-evaluated .....	25
Figure 14 – Segment KSI Crash Rates – Re-evaluated .....	26
Figure 15 – Selected Intersections and Segments.....	29
Figure 16 – Selected Intersections and Segments with Underserved Areas.....	30

## 1. INTRODUCTION

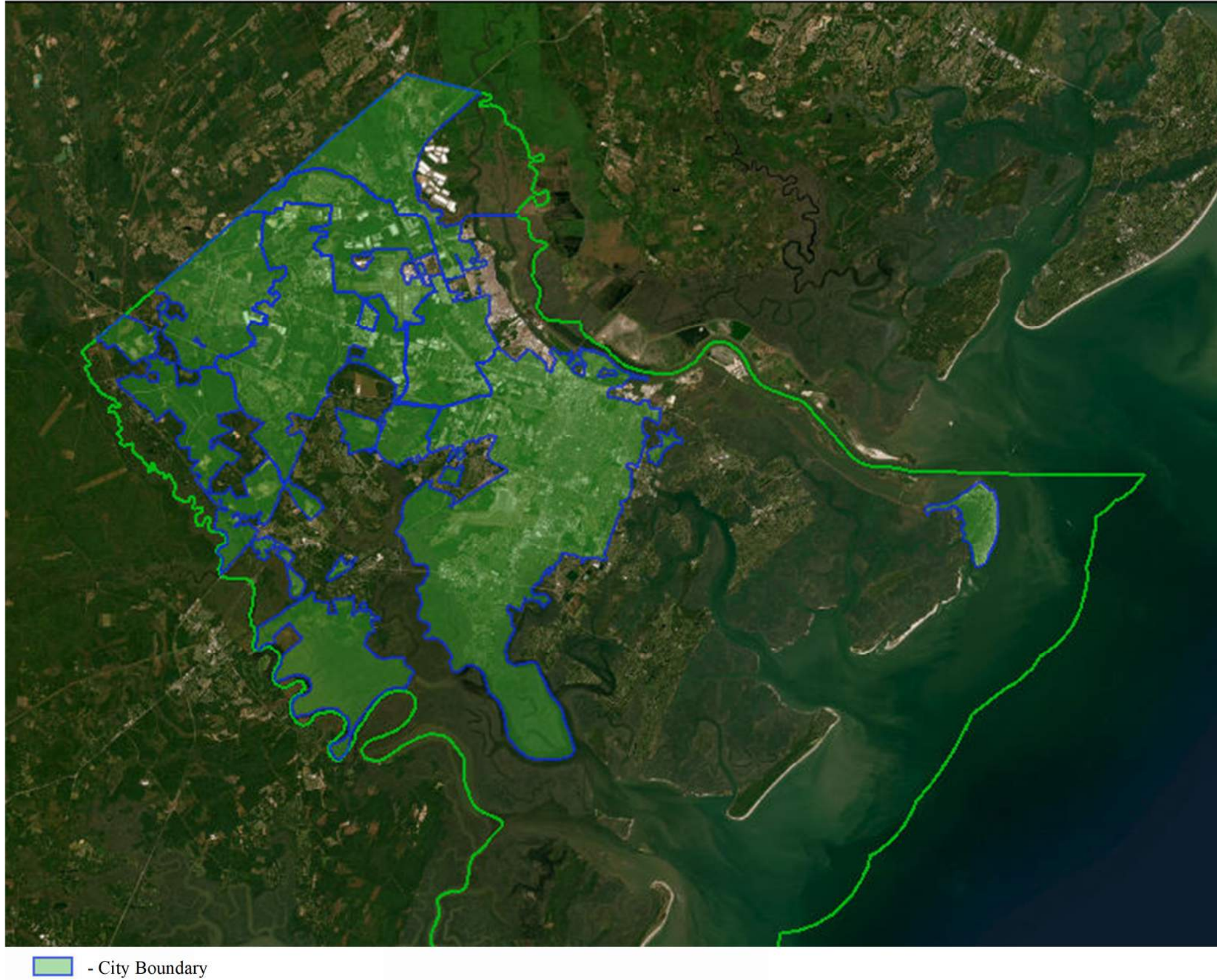
The goal of this project is to create a comprehensive Safety Action Plan for unincorporated Chatham County that will identify the most significant roadway safety concerns in our community and make short, mid, and long-term recommendations for projects and strategies to address those concerns with well-defined solutions. These solutions should guide the way to the ultimate goal of zero traffic fatal and serious injury crashes. This report documents the analysis of existing conditions and historical trends to provide a baseline level of crashes involving fatalities and serious injuries across unincorporated Chatham County, the analysis of locations and severity of crashes as well as contributing factors and types for all road users, and the analysis of systemic and specific safety needs and geospatial identification of higher- risk locations.

Crash data for the period from January 1, 2018, to December 31, 2022, was obtained from the AASHTOWare Safety (Numetric) database. The database uses the KABCO Severity ranking of crashes as follows:

- K – Killed
- A – Suspected Serious Injury
- B – Suspected Minor/Visible Injury
- C – Possible Injury/Complaint
- O – No Injury

During the five-year period, there were 12,463 total crashes within unincorporated Chatham County that included 82 fatal (K) crashes and 274 serious injury (A or SI) crashes. The analysis focuses on the 356 fatal and serious injury (KSI) crashes in unincorporated Chatham County. Figure 1 shows the unincorporated areas of Chatham County.

Figure 1 – Map of Unincorporated Chatham County



## 2. HISTORICAL TRENDS

Within unincorporated Chatham County, there were 12,463 total crashes within the five-year analysis period. Table 1 shows the breakdown of crashes by year and severity of crash.

**Table 1 – Crashes by Year and Severity**

Year	Severity of Crashes					Total
	K	A	B	C	O	
2018	9	29	138	303	1,763	<b>2,242</b>
2019	5	48	172	407	2,019	<b>2,651</b>
2020	13	66	160	369	1,653	<b>2,261</b>
2021	32	62	240	392	2,002	<b>2,728</b>
2022	23	69	194	449	1,846	<b>2,581</b>
<b>Total</b>	<b>82</b>	<b>274</b>	<b>904</b>	<b>1,920</b>	<b>9,283</b>	<b>12,463</b>

As shown in Table 1, there was an increase in fatal and serious injury crashes in 2021 and 2022 following 2020 which had lower crashes most likely due to the COVID-19 pandemic.

Table 2 shows the breakdown of crashes by year and type of crash.

**Table 2 – Crashes by Year and Type**

Year	Crash Type									Total
	Rear End	Not a Collision with Motor Vehicle	Sideswipe Same Direction	Sideswipe Opposite Direction	Left Angle Crash	Right Angle Crash	Angle (other)	Head On	None	
2018	919	509	222	80	206	26	205	43	32	<b>2,242</b>
2019	1,057	508	329	82	227	36	309	85	18	<b>2,651</b>
2020	830	479	297	52	193	37	254	108	11	<b>2,261</b>
2021	1,135	410	351	65	277	48	321	109	12	<b>2,728</b>
2022	1,111	371	353	59	257	54	265	101	10	<b>2,581</b>
<b>Total</b>	<b>5,052</b>	<b>2,277</b>	<b>1,552</b>	<b>338</b>	<b>1,160</b>	<b>201</b>	<b>1,354</b>	<b>446</b>	<b>83</b>	<b>12,463</b>

As shown in Table 2, the predominant crash types are rear end and not a collision with motor vehicle. Typical crashes associated with not a collision with motor vehicle involve collisions with objects either on or off the roadway such as pedestrians, bicycles, parked vehicles, trees, guard rail, utility poles, and animals.

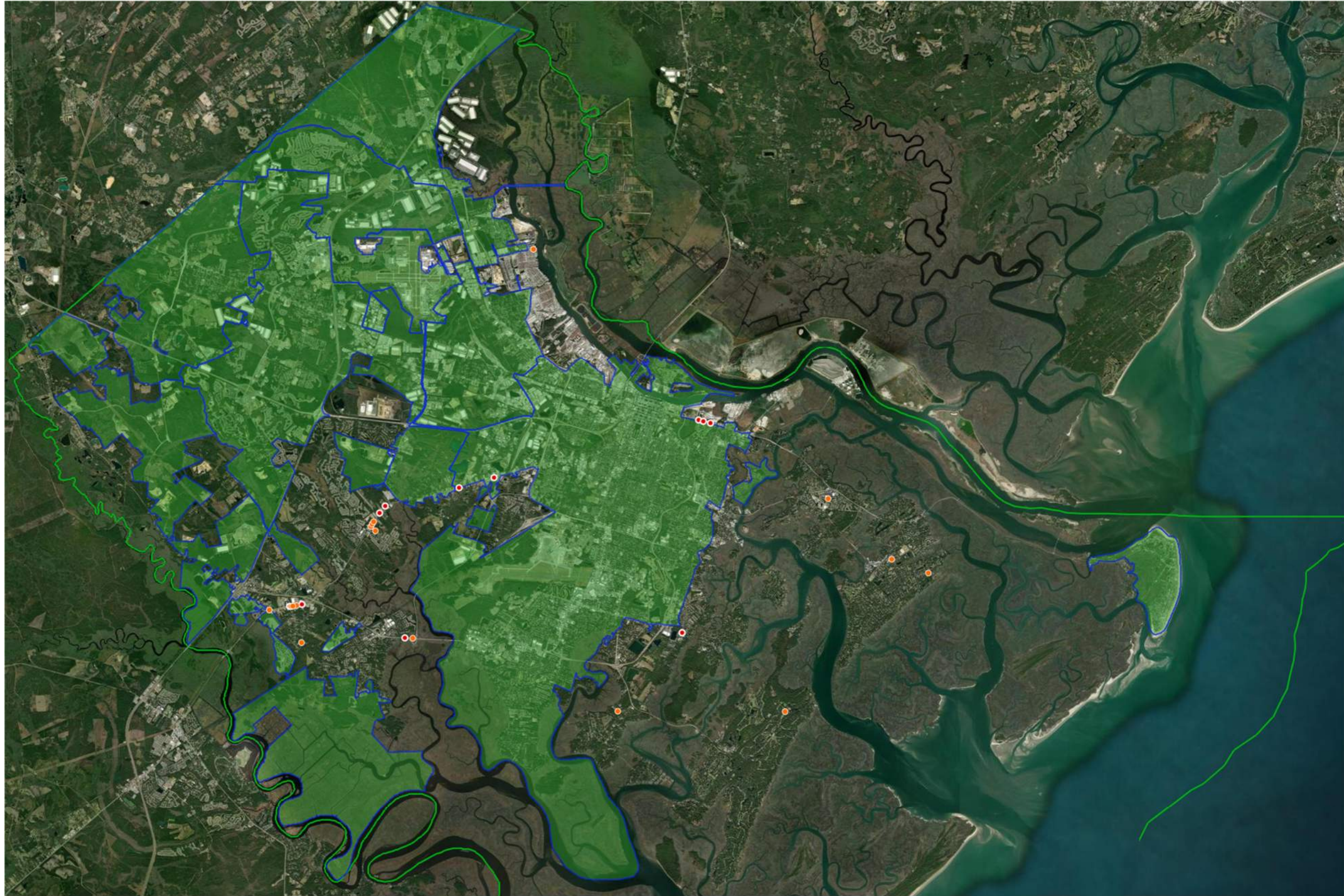
### **3. KSI CRASH ANALYSIS**

The Numetric database classifies crash causes into the following crash related categories: pedestrians, bicycles, distracted drivers, motorcycles, single motor vehicles, impaired drivers, large trucks, and intersections. It is noted that a crash can include more than one of the above categories, such as a crash can be both pedestrian and intersection related.

#### **Pedestrian and Bicycle Crashes**

Of the 356 fatal and serious injury (KSI) crashes, 29 were pedestrian related of which 11 were fatal crashes, and 9 were bicycle related of which 0 were fatal crashes. Figures 2 and 3 show the locations of the pedestrian and bicycle crashes within unincorporated Chatham County.

Figure 2 – Pedestrian KSI Crashes



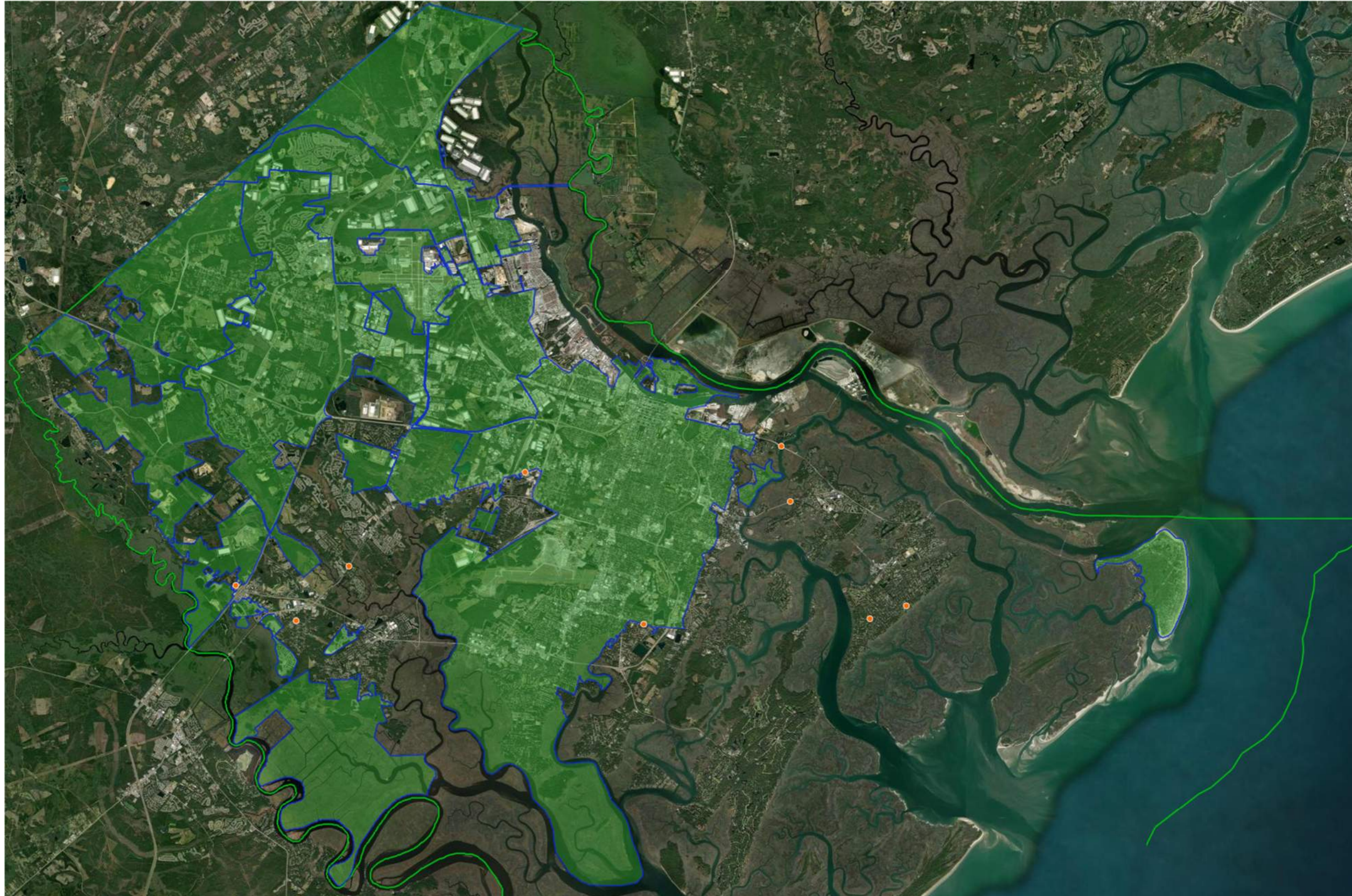
As shown in Figure 2, the pedestrian KSI crashes are mainly occurring at the following locations:

- US 17/SR 25 (Ogeechee Road) corridor between Derrick Inn Road & Dean Forest Road,
- US 17/SR 25 (Ogeechee Road) corridor between Chevis Road and SR 204,
- SR 204 (Abercorn Street) between King George Boulevard and Veterans Parkway, and
- E. President Street between Truman Parkway and Goebel Avenue.

The majority of pedestrian KSI crashes occurred along roadways without sidewalks particularly along E. President Street and along US 17/SR 25 (Ogeechee Road). Several crashes occurred near or at signalized intersections with pedestrian signals, however, at the majority of locations sidewalks were not present.



Figure 3 – Bicycle KSI Crashes



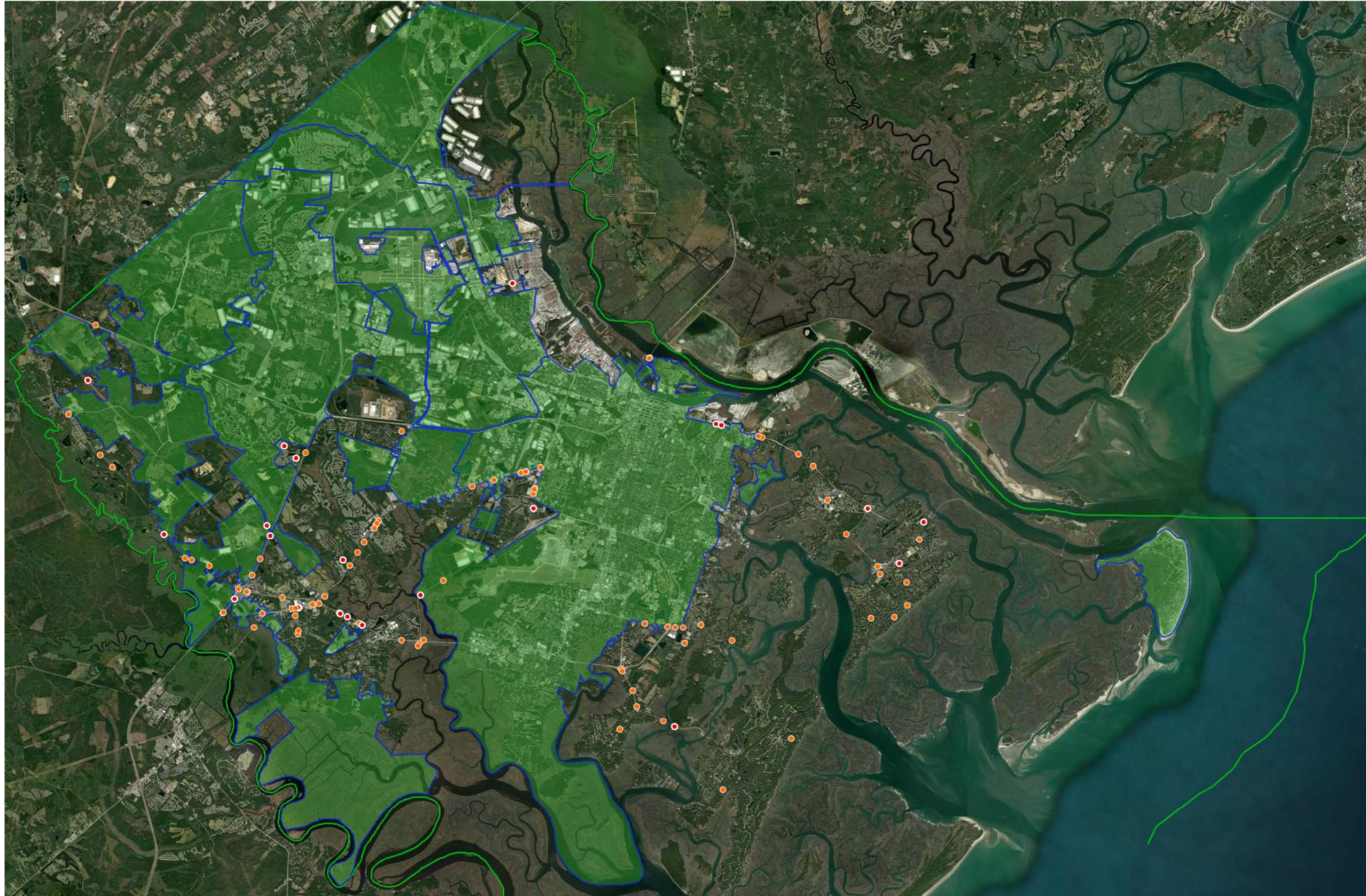
As shown in Figure 3, the bicycle KSI crashes are sporadic mainly along SR 204 (Abercorn Street), US 17/SR 25 (Ogeechee Road), US 80 (Islands Expressway).

A further review of the bicycle KSI crashes and the East Coast Greenway route through unincorporated Chatham County indicated 1 crash occurred along US 17/SR 25 (Ogeechee Road) near Quacco Road was along this route. None of the other bicycle KSI crashes occurred along bike routes.

### **Distracted Driver Crashes**

Of the 356 fatal and serious injury (KSI) crashes, 105 were distracted driver related of which 21 were fatal crashes. Distracted driver crashes typically involve: inattentive driver; driver distraction from texting, talking on hand-held device or hands-free device, other occupants in vehicle; and driver distraction from other vehicle interior or exterior factors. Figure 4 shows the location of the distracted driver crashes within unincorporated Chatham County.

Figure 4 – Distracted Driver KSI Crashes



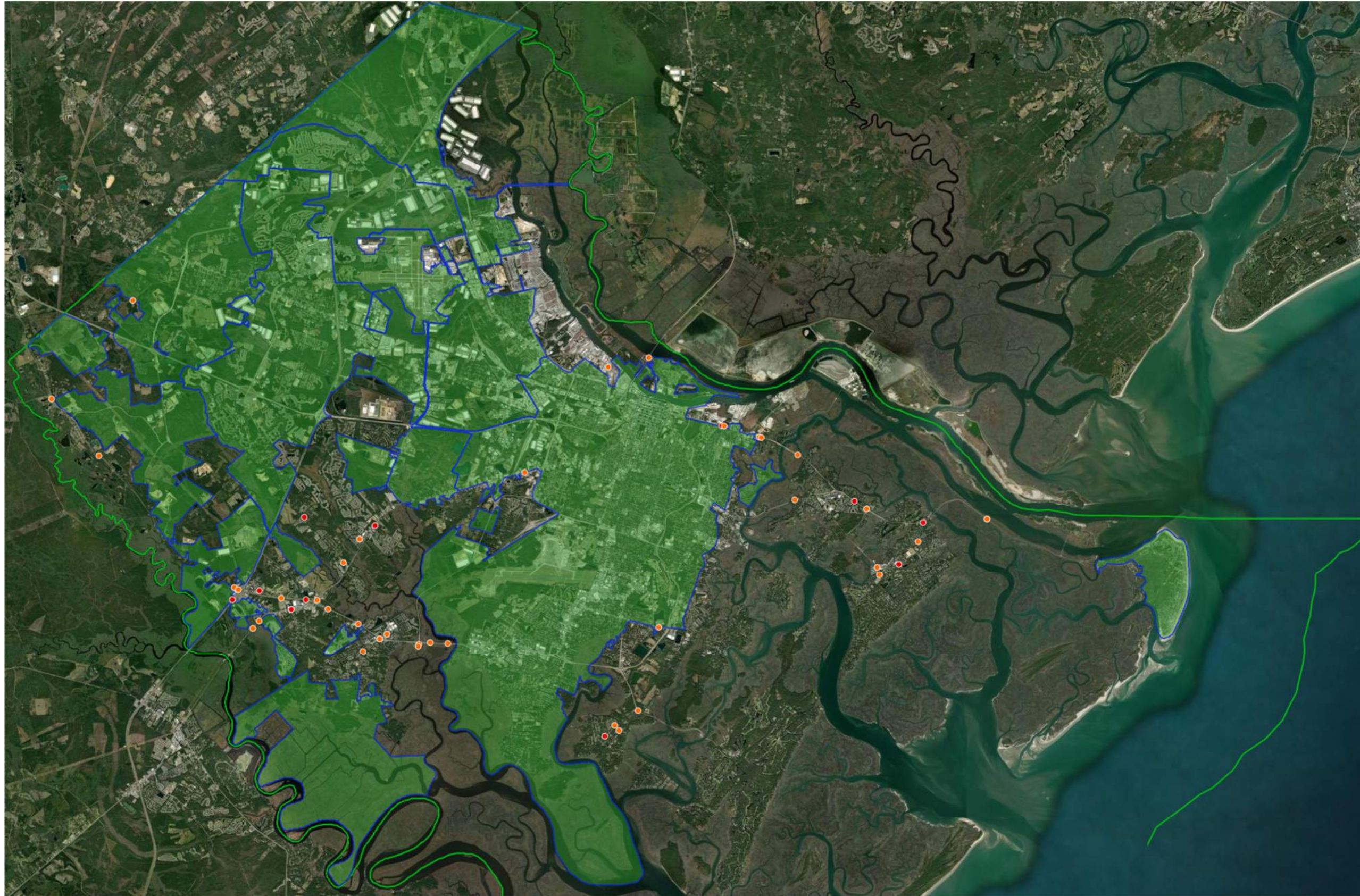
As shown in Figure 4, the distracted driver KSI crashes are mainly occurring at the following locations:

- US 17/SR 25 (Ogeechee Road) at SR 204 (Abercorn Street) interchange,
- US 17/SR 25 (Ogeechee Road) between Berwick Boulevard and Derrick Inn Road,
- US 17/SR 25 (Ogeechee Road) between Chatham Parkway and I-516,
- SR 204 (Abercorn Street/Fort Argyle Road) east and west of I-95,
- SR 204 (Abercorn Street) at Veterans Parkway interchange,
- Whitefield Avenue south of Truman Parkway,
- E. Montgomery Cross Road east of Truman Parkway, and
- US 80 (Islands Expressway) east of Elba Island Road.

### **Motorcycle Crashes**

Of the 356 fatal and serious injury (KSI) crashes, 53 were motorcycle related of which 13 were fatal crashes. Figure 5 shows the location of the motorcycle crashes within unincorporated Chatham County.

Figure 5 – Motorcycle KSI Crashes



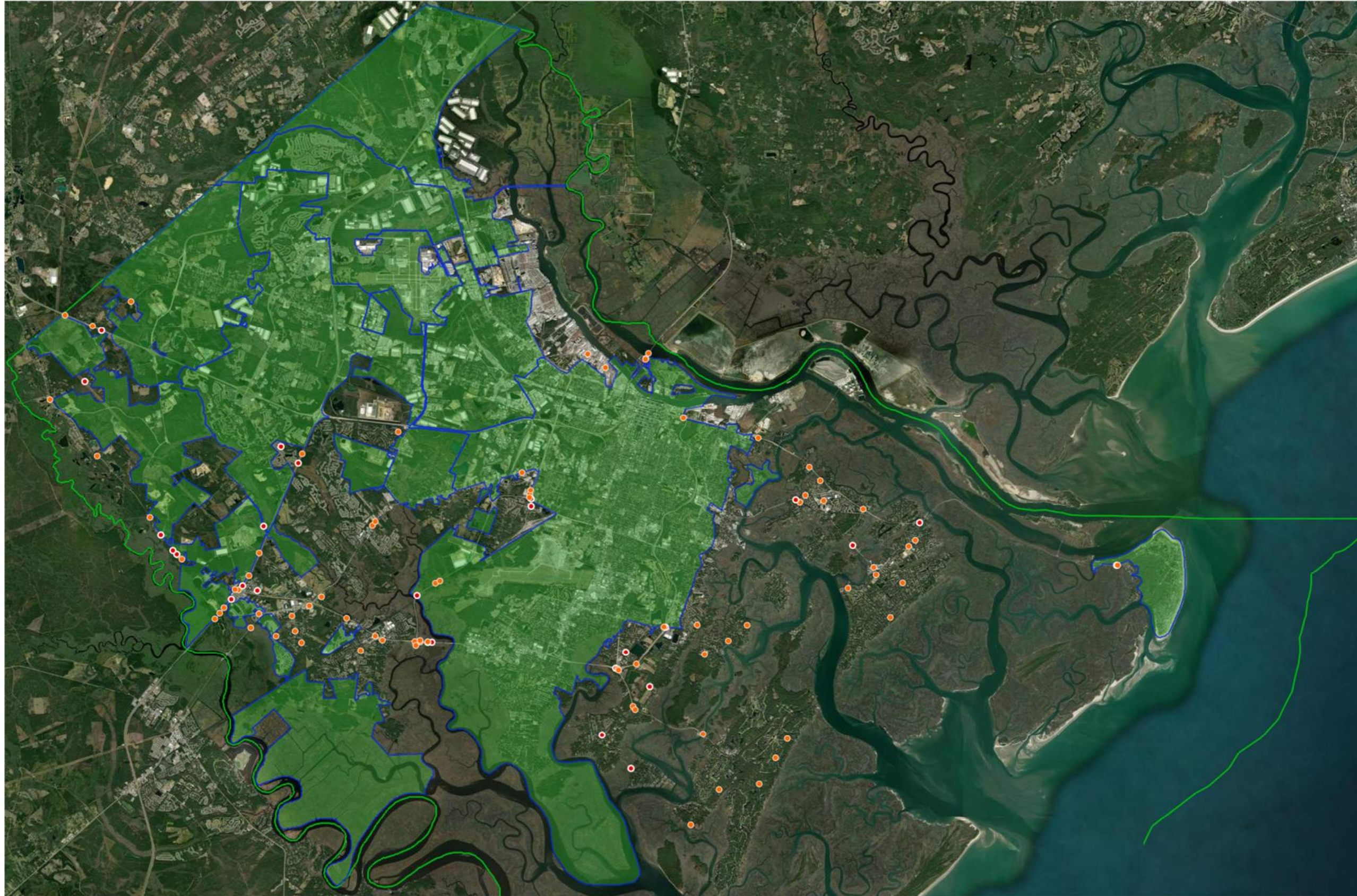
As shown in Figure 5, the motorcycle KSI crashes are mainly occurring at the following locations:

- SR 204 (Abercorn Street) between I-95 and Veterans Parkway,
- US 17/SR 25 (Ogeechee Road) between SR 204 (Abercorn Street) and Dean Forest Road,
- US 80 (Islands Expressway) east of Truman Parkway,
- Johnny Mercer Boulevard south of US 80 (Islands Expressway), and
- Whitefield Avenue south of SR 204 (Abercorn Street).

### **Single Motor Vehicle Crashes**

Of the 356 fatal and serious injury (KSI) crashes, 105 were single motor vehicle related of which 26 were fatal crashes. Figure 6 shows the location of the single motor vehicle crashes within unincorporated Chatham County.

Figure 6 – Single Motor Vehicle KSI Crashes



As shown in Figure 6, the single motor vehicle KSI crashes are mainly occurring at the following locations:

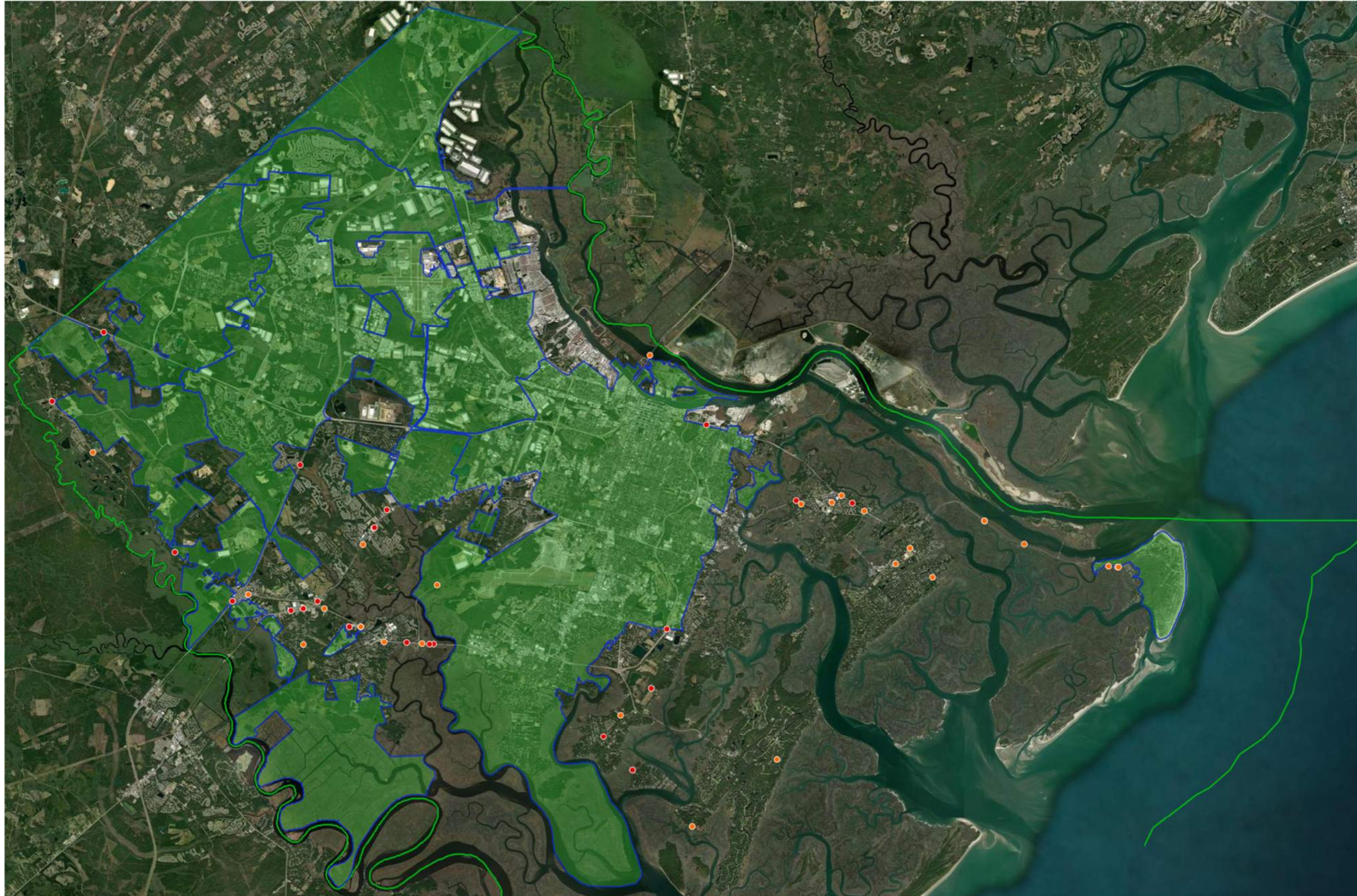
- SR 204 (Fort Argyle Road) west of I-95,
- SR 204 (Abercorn Street) at Veterans Parkway interchange,
- US 80 (Islands Expressway) between Crusoe Island Drive and Catalina Drive, and
- Johnny Mercer Boulevard between Bryan Woods Road and Sea Island Drive.

### **Impaired Driver Crashes**

Of the 356 fatal and serious injury (KSI) crashes, 49 were impaired driver related of which 23 were fatal crashes. Impaired driver crashes typically involve driver driving under the influence of drugs or alcohol. Figures 7 shows the location of the impaired driver crashes within unincorporated Chatham County.



Figure 7 – Impaired Driver KSI Crashes



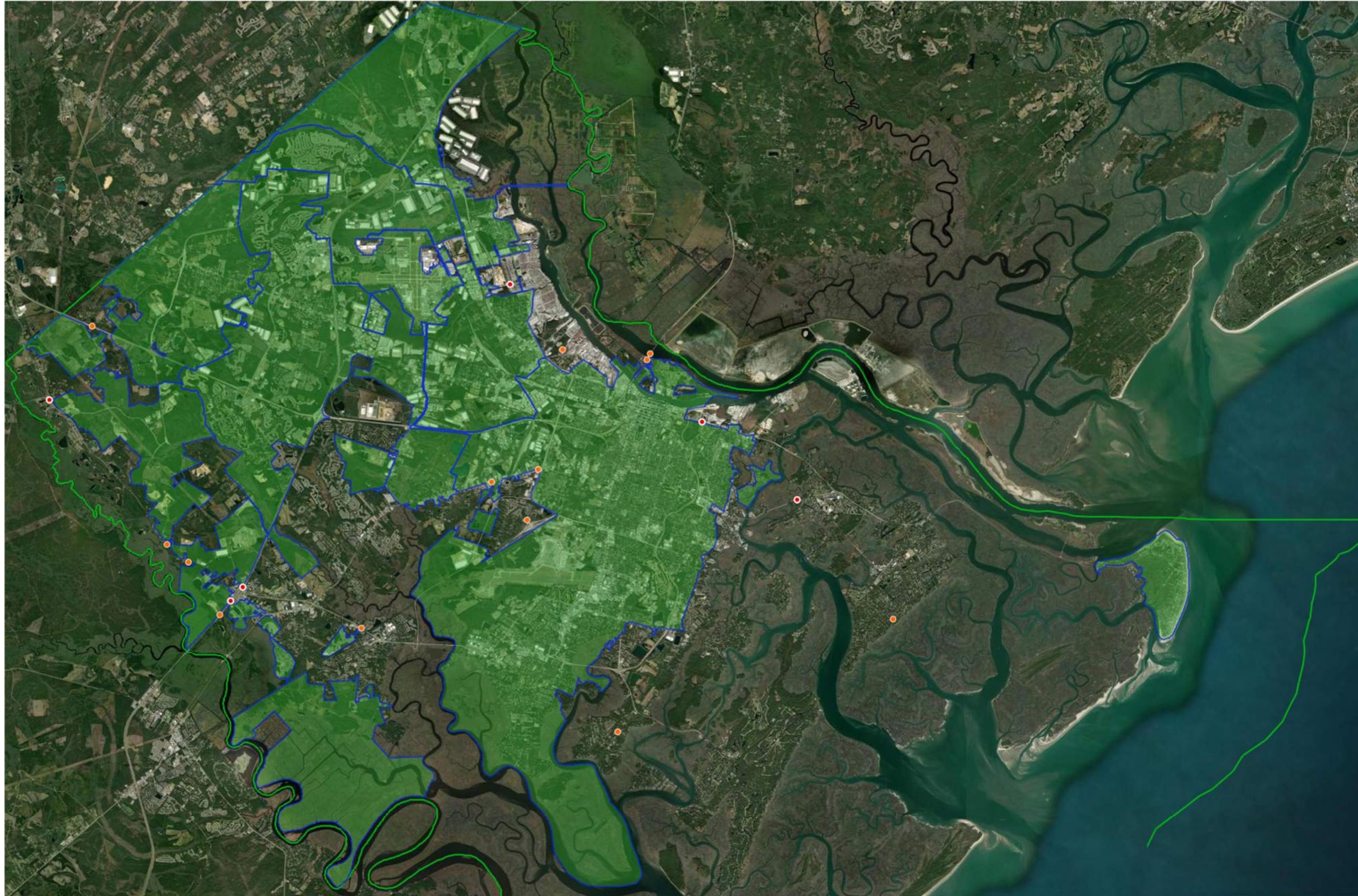
As shown in Figure 7, the impaired driver KSI crashes are mainly occurring at the following locations:

- US 17/SR 25 (Ogeechee Road) at SR 204 (Abercorn Street) interchange,
- SR 204 (Abercorn Street) east of US 17/SR 25 (Ogeechee Road),
- SR 204 (Abercorn Street) at Veterans Parkway interchange, and
- US 80 (Islands Expressway) between Johnny Mercer Boulevard and Bryan Woods Road.

### **Large Truck Crashes**

Of the 356 fatal and serious injury (KSI) crashes, 19 were large truck related of which 6 were fatal crashes. Figure 8 shows the location of the large trucks crashes within unincorporated Chatham County.

Figure 8 – Large Truck KSI Crashes

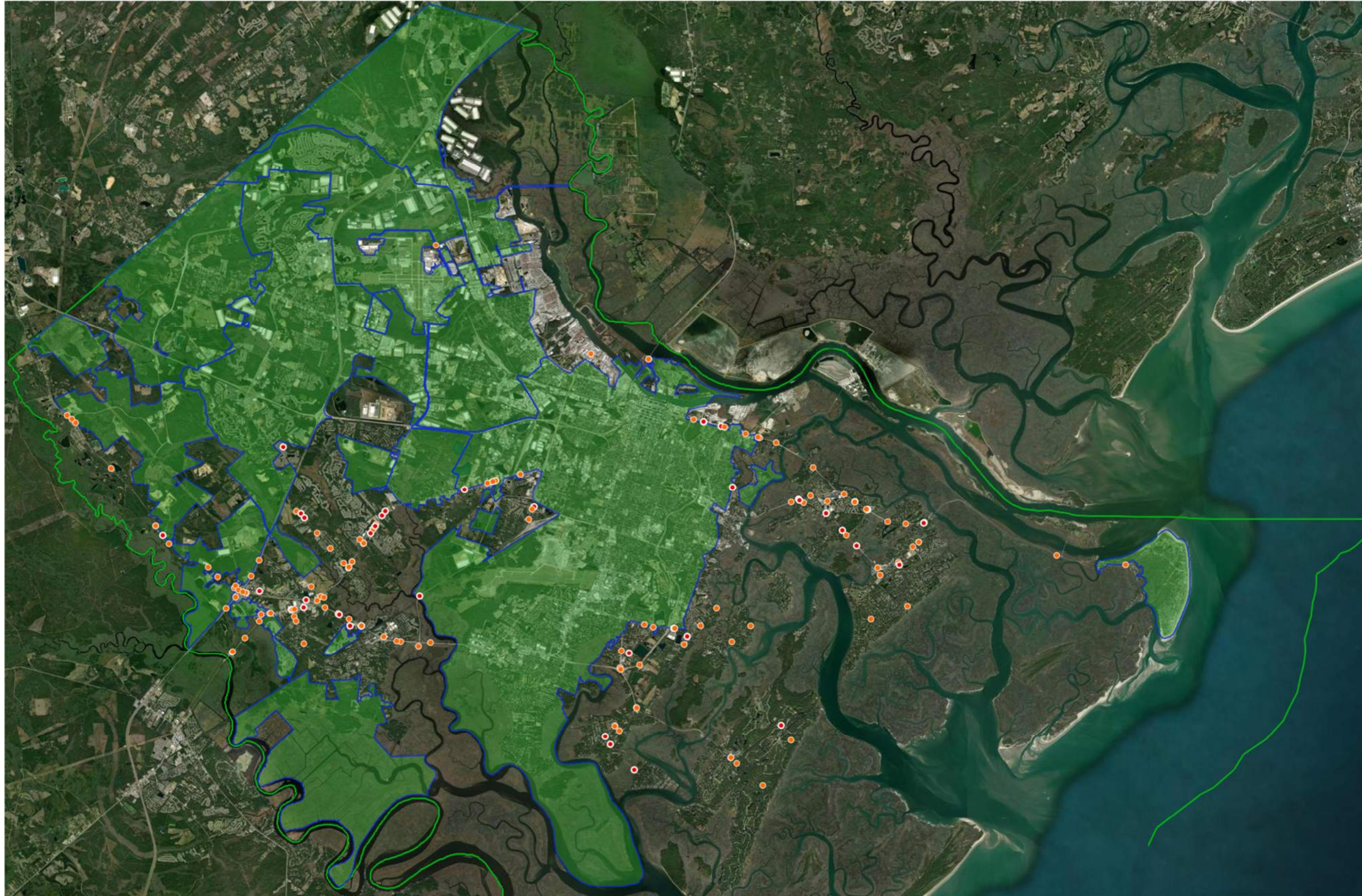


As shown in Figure 8, the large truck KSI crashes are sporadic mainly along SR 204 (Abersorn Street) and US 17/SR 25 (Ogeechee Road).

**Intersection Crashes**

Of the 356 fatal and serious injury (KSI) crashes, 186 were intersection related of which 43 were fatal crashes. Figures 9 shows the location of the intersection crashes within unincorporated Chatham County.

Figure 9 – Intersection KSI Crashes



As shown in Figure 9, the intersection KSI crashes are mainly occurring at the following locations:

- US 17/SR 25 (Ogeechee Road) at Chevis Road,
- US 17/SR 25 (Ogeechee Road) at Quacco Road,
- US 17/SR 25 (Ogeechee Road) at Berwick Boulevard,
- US 17/SR 25 (Ogeechee Road) at Cottonvale Road,
- US 17/SR 25 (Ogeechee Road) at Mersy Way,
- US 17/SR 25 (Ogeechee Road) at Chatham Parkway,
- US 17/SR 25 (Ogeechee Road) at SR 204 (Abercorn Street) ramps
- SR 204 (Fort Argyle Road) at Highgate Boulevard,
- SR 204 (Abercorn Street) at Sweetwater Station Drive,
- SR 204 (Abercorn Street) at Ford Avenue,
- SR 204 (Abercorn Street) at I-95 ramps/Gateway Boulevard S./Gateway Boulevard W.
- ACL Boulevard at Westlake Avenue/Liberty Parkway,
- E. Montgomery Cross Road at Varnedoe Drive,
- US 80 (Islands Expressway) Way at Bryan Woods Road/Sea Island Drive, and
- Quacco Road at Quacco Trl & Pink Dogwood Drive.

#### 4. KSI SAFETY ANALYSIS

The Numetric database provides crash rates for intersections and roadway segments, which was utilized in determining the High-Injury Network (HIN).

From the Numetric Calculations Overview, the crash rate is calculated using the following equation:

$$\left( \frac{\frac{CR}{T_y}}{L} \right) \left( \frac{M}{V \cdot 365} \right)$$

*Where:*

*CR is the total number of crashes in the study period.*

*Ty is the time in years.*

*L is the Length of the roadway segment in miles (1 for intersections)*

*M is the Crash Multiplier, customized for each agency.*

*V is the Annual Average Daily Traffic (total entering vehicles for intersections).*

From the KSI crash analysis, over 50% of the crashes were intersection related. Pedestrian and bicycle related crashes together constitute about 10% of the crashes. However, pedestrians and bicyclists are the most vulnerable road users in that they do not have protection from vehicular road users. The Numetric database was further investigated in order to develop the High-Injury Network using crash rates for intersection crashes together with pedestrian crashes as bicycle related crashes are sporadic across unincorporated Chatham County.

The investigation identified 78 intersections ranked by crash rate as well as 145 segments, some involving pedestrian crashes, also ranked by crash rate are shown in Figures 10, 11, and 12. Within the database, roadways are identified by unique identifiers. For instance, SR 204 (Abercorn Street) by 05110204001, and US 17/SR 25 (Ogeechee Road) by 05110025001. An intersection is, therefore, identified by the two unique identifiers. Similarly, a segment is identified by the unique identifier plus the Mile Post designations.

Figure 10 – Intersection KSI Crash Rates

Intersections					Crash Counts by Severity	
Rank	Intersection	Inter_ID	Crashes	Crash Rate	K	A
1	0512045600I, 0512046800I	31474	1.0	0.3	1	0
2	0512056600I, Tiffany Place (0512056900I)	31867	1.0	0.3	0	1
3	Basin Court (0512257700I), Basin Road (05120084I)	31875	1.0	0.3	0	1
4	0512054900I, 0512077900I, Cardinal Road (051205I)	31630	1.0	0.2	0	1
5	0512012200D, 0512013000I, 0512014300I, 051228I	32060	1.0	0.2	0	1
6	Glade Street (0512010400I), Whitefield Avenue (05I	31070	2.0	0.2	0	2
7	0512274100I, Chevis Road (0512007600I)	31856	1.0	0.2	0	1
8	0513115607I, East Montgomery Cross Road (0512I	31811	5.0	0.2	1	4
9	Bonaventure Road (0512079700I), Bonaventure Ro	34134	1.0	0.1	1	0
10	Ferguson Avenue (0512076700I), Shipyard Road (0I	31027	1.0	0.1	1	0
11	Mendel Avenue (0512009800I), Whitefield Avenue (C	31046	1.0	0.1	1	0
12	0512082400I, 0513231707D, 0513231707I, Abercor	35503	1.0	0.1	0	1
13	0512017200I, Butler Avenue (0511002600I), OgeecI	33709	6.0	0.1	2	4
14	Concord Road (0512016200I), Penn Waller Road (C	32643	1.0	0.1	1	0
15	Acl Boulevard (0512060100I), Louis Mills Boulevard	33281	1.0	0.1	0	1
16	0512104500I, Beechwood Avenue (0512104100I), F	31587	1.0	0.1	0	1
17	Liberty Parkway (0512080100D), Westlake Avenue	33576	1.0	0.1	0	1
18	0511002500D, Chevis Road (0512007600I), OgeecI	32006	4.0	0.1	2	2
19	Larbre Road (0512016300I), Penn Waller Road (05I	32685	1.0	0.1	0	1
20	0512021700I, 0512022400I, Mayer Avenue (051201I	32504	1.0	0.1	0	1
21	0512114300D, Bradley Creek Drive (0512019900I),	33217	2.0	0.1	1	1
22	0512023000I, 0512023100I, 0512094700I, Butler Av	32742	1.0	0.1	0	1
23	0512077900I, Norwood Avenue (0512076700I)	32147	1.0	0.1	0	1
24	0511002500D, 0512149400D, 0512149400I, OgeecI	32803	4.0	0.1	0	4
25	0512004600I, Atlantic Coastal Highway (051100250I	33060	4.0	0.1	0	4
26	0513231807I, Ogeechee Road (0511002500I)	34159	3.0	0.1	0	3
27	Abercorn Street (0511020400I), Arkwright Lane (05I	32345	1.0	0.1	0	1
28	05110204SPD, 05110204SPI, 0512162400I, Lake S	30986	2.0	0.1	0	2
29	0512265400I, 0512267900I, Abercorn Street (05110I	33027	2.0	0.1	0	2
30	0512050700I, Bakers Crossing (0512160100I), Non	31873	1.0	0.1	0	1
31	0512077200I, Abercorn Street Extension (05120774I	32262	1.0	0.1	0	1
32	Abercorn Street (0511020400I), Bush Road (05120I	32726	1.0	0.1	0	1
33	Savannah Harbor Parkway (0512074400D), Savan	36403	2.0	0.1	0	2
34	0512114300D, Bryan Woods Road (0512114300I),	33597	2.0	0.1	2	0
35	0512084200I, Acl Boulevard (0512080100I), Liberty	33543	1.0	0.1	0	1
36	0512078100D, 0513228907I, Chatham Parkway (05I	34167	4.0	0.1	0	4
37	0511002500D, 0512004200I, Larchmont Drive (05I	32533	3.0	0.1	0	3
38	05110204SPD, 05110204SPI, 0512098200I, Mc Wh	30975	1.0	0.1	0	1
39	0512140200D, 0512140200I, Butler Avenue (05110I	33863	2.0	0.0	1	1
40	Diamond Causeway (05110204SPI), Ferguson Ave	31122	2.0	0.0	0	2
41	Elmhurst Avenue (0512083600I), Smith Drive (0512I	31689	1.0	0.0	1	0
42	0511002500D, Ogeechee Road (0511002500I), Qu	32462	3.0	0.0	0	3
43	Laurelwood Drive (0512145200I), Quacco Road (05I	32949	1.0	0.0	0	1
44	Quacco Road (0512077300I), Quacco Trail (05122I	33336	1.0	0.0	0	1
45	Atlantic Coastal Highway (0511002500D), Basin Ro	31404	2.0	0.0	0	2
46	0512138200I, Johnny Mercer Boulevard (05121143CI	33811	1.0	0.0	0	1
47	0512016400I, 0512114300I, Walthour Road (05120I	33044	2.0	0.0	0	2
48	0512078700D, 0512163400I, 0513109607I, Islands	35611	2.0	0.0	0	2
49	0512017700I, Butler Avenue (0511002600I), OgeecI	34061	1.0	0.0	0	1
50	0512078700D, 0512078700I, Dulany Avenue (0512I	35679	2.0	0.0	2	0
51	0511020400D, 0512276300D, 0512276300I, 05132I	32251	1.0	0.0	0	1
52	0512006800I, Abercorn Street (0511020400I), Aberc	31745	4.0	0.0	2	2
53	0512099100I, Butler Avenue (0511002600I), Mobley	33988	1.0	0.0	0	1
54	0512078700D, 0512113400D, Islands Expressway	35437	1.0	0.0	0	1
55	0512077400D, 0512147500I, Abercorn Street (0511I	32207	2.0	0.0	0	2
56	0512045600I, East Montgomery Cross Road (0512I	31852	1.0	0.0	0	1
57	0512077200I, Atlantic Coastal Highway (051100250I	32192	2.0	0.0	0	2
58	Gulfstream Road (0512000900I), Robert B Miller Ro	36903	1.0	0.0	0	1
59	0513117107I, East Montgomery Cross Road (0512I	31819	1.0	0.0	0	1
60	0512114300I, 0512171500I, 0512171700D, 051217I	33434	2.0	0.0	2	0
61	0512006700I, Abercorn Street (0511020400I), Aberc	31931	3.0	0.0	0	3
62	0512016500I, Butler Avenue (0511002600I), OgeecI	33395	1.0	0.0	0	1
62	Butler Avenue (0511002600I), Ogeechee Road (05I	33445	1.0	0.0	0	1
64	0512078700D, 0512095800I, Islands Expressway (C	35348	1.0	0.0	0	1
65	0512078700D, 0513083507I, East President Street	35631	1.0	0.0	1	0
66	0512078700D, 0512078700I, 0512089900I, 051217I	34711	1.0	0.0	0	1
67	0512016500I, Johnny Mercer Boulevard (05121143CI	32936	1.0	0.0	0	1
68	0512020700I, 0512114300D, Johnny Mercer Boulev	32925	1.0	0.0	1	0
69	0512017200I, 0512114300D, 0512170700I, Johnny	33142	1.0	0.0	0	1
70	Bradley Boulevard (0512278800I), Ogeechee Road	31777	1.0	0.0	0	1
71	0512058900I, 0513231507I, Ogeechee Road (0511I	34345	1.0	0.0	0	1
72	0512046800I, 0512048200I, Blakeley Road (051204I	31523	1.0	0.0	0	1
73	Ogeechee Road (0511002500I), Trailer Park Road (	33947	1.0	0.0	1	0
74	0512021500I, Johnny Mercer Boulevard (05121143CI	32628	1.0	0.0	0	1
75	0511002500D, Gateway Boulevard East (05120774I	31910	1.0	0.0	0	1
76	0511002500D, 0512078000I, 0512271100I, Elk Roa	33289	1.0	0.0	1	0
77	Fountain Road (0512107600I), Ogeechee Road (05I	32025	1.0	0.0	1	0
78	0512168300I, 0512168400I, Butler Avenue (051100I	33906	1.0	0.0	1	0



Figure 11 – Segment KSI Crash Rates

Segments							Crash Counts by Severity	
Rank	Route / MP	Crashes	Crash Rate	Crashes Per Mile	Segment AADT	Segment Length	K	A
1	0512135900D / 0.1609 - 0.1932	1.0	2,829.7	6.2	599.5	0.0323	0	1
2	0512256600I / 0.05 - 0.09	1.0	1,142.5	5.0	1199	0.04	1	0
3	King George Boulevard (0512119700I) / 0.86 - 0.96	4.0	1,076.3	7.8	1977	0.103	0	4
4	0516114834I / 0 - 0.012	1.0	930.0	16.7	4910	0.012	0	1
5	0516114820I / 0.259 - 0.27	1.0	905.7	18.2	5500	0.011	0	1
6	Sandhill Avenue (0512089700I) / 0 - 0.08	1.0	571.3	2.5	1199	0.08	1	0
7	0512013200I / 0.31 - 0.41	1.0	457.0	2.0	1199	0.1	0	1
7	0512140200I / 0.8 - 0.9	1.0	457.0	2.0	1199	0.1	0	1
9	0512149400I / 0.01 - 0.241	1.0	395.7	0.9	599.5	0.231	0	1
10	0512119700D / 0.1275 - 0.3062	1.0	390.6	1.1	785	0.1787	0	1
11	Smith Drive (0512077900I) / 0.97 - 1.05	1.0	327.7	2.5	2090	0.08	0	1
12	0512084200I / 0.13 - 0.27	1.0	326.4	1.4	1199	0.14	1	0
13	0512140200I / 0.65 - 0.8	1.0	304.7	1.3	1199	0.15	0	1
14	Beaufort Road (0512007800I) / 0.13 - 0.51	2.0	240.5	1.1	1199	0.38	0	2
15	Blue Lake Boulevard (0512256000I) / 0.05 - 0.25	1.0	228.5	1.0	1199	0.2	1	0
16	Woodhull Road (0512078700I) / 0 - 0.018	1.0	207.8	11.1	14650	0.018	0	1
17	Walthour Road (0512014800I) / 6.159 - 6.31	1.0	191.0	1.3	1900	0.151	0	1
18	0512018700I / 0.14 - 0.38	1.0	190.4	0.8	1199	0.24	0	1
19	Gateway Boulevard West (0512276300I) / 0.048 - 0	1.0	188.8	0.8	1199	0.242	0	1
20	0512004600I / 0.23 - 0.49	1.0	175.8	0.8	1199	0.26	0	1
21	Abercorn Street Extension (0511020400I) / 0.69 - 0	2.0	167.9	2.5	4080	0.16	0	2
22	Walthour Road (0512014800I) / 5.75 - 5.95	1.0	144.2	1.0	1900	0.2	0	1
23	Atlantic Coastal Highway (0511002500I) / 10.68 - 10	1.0	131.0	5.9	12300	0.034	0	1
24	Grove Point Road (0512006600I) / 0 - 0.35	1.0	130.6	0.6	1199	0.35	0	1
25	Grove Point Road (0512081400I) / 0.23 - 0.64	1.0	111.5	0.5	1199	0.41	1	0
26	Chevis Road (0512007600I) / 0.2 - 0.36	1.0	111.2	1.3	3080	0.16	0	1
27	0512008100I / 0.32 - 1.091	1.0	109.3	0.3	650	0.771	0	1
28	North Lathrop Avenue (0512074000I) / 0.48 - 0.65	1.0	107.1	1.2	3010	0.17	0	1
29	Abercorn Street (0511020400I) / 8.19 - 8.32	1.0	102.1	1.5	4130	0.13	0	1
30	Chevis Road (0512007600I) / 0.39 - 0.78	2.0	91.2	1.0	3080	0.39	0	2
31	Atlantic Coastal Highway (0511002500I) / 10.58 - 10	2.0	89.1	4.0	12300	0.1	0	2
32	Abercorn Street Extension (0511020400D) / 16.052	3.0	88.5	4.7	14550	0.1276	0	3
33	Whitefield Avenue (05110204SPI) / 2.668 - 2.717	1.0	87.4	4.1	12800	0.049	0	1
34	East Montgomery Cross Road (0512030200I) / 1.04	1.0	81.1	2.5	8450	0.08	0	1
35	Atlantic Coastal Highway (0511002500D) / 3.7547 -	2.0	71.7	4.6	17700	0.0864	0	2
36	East Montgomery Cross Road (0512030200D) / 0 -	1.0	61.1	1.9	8450	0.1061	0	1
37	Ferguson Avenue (0512076700I) / 0.23 - 0.48	1.0	60.9	0.8	3600	0.25	0	1
38	Abercorn Street (0511020400I) / 8.32 - 8.45	2.0	57.9	3.1	14550	0.13	0	2
39	Penn Waller Road (0512015400I) / 0.65 - 0.89	1.0	57.7	0.8	3954	0.24	0	1
40	Red Fox Drive (0512119700I) / 0.66 - 0.846	2.0	57.2	2.2	10300	0.186	0	2
41	Fort Argyle Road (0511020400I) / 1.6 - 1.86	1.0	51.7	0.8	4080	0.26	0	1
42	05110404SPI / 2.546 - 2.61	1.0	50.7	3.1	16900	0.064	0	1
43	Walthour Road (0512014800I) / 7.37 - 7.61	1.0	48.7	0.8	4690	0.24	0	1
44	West Lathrop Avenue (0512114200I) / 0.06 - 0.39	1.0	48.0	0.6	3460	0.33	0	1
45	0512124100I / 0.661 - 0.899	1.0	47.4	0.8	4860	0.238	0	1
46	Abercorn Street (0511020400I) / 8.45 - 8.53	1.0	47.1	2.5	14550	0.08	1	0
47	West Montgomery Cross Road (05110204SPD) / 0	1.0	46.4	1.7	9800	0.1206	0	1
48	Diamond Causeway (05110204SPI) / 2.717 - 2.84	1.0	45.5	1.6	9800	0.123	0	1
49	Shipyard Road (0512077500I) / 0.82 - 1.46	1.0	44.8	0.3	1910	0.64	1	0
50	Butler Avenue (0511002600I) / 32.63 - 33.16	2.0	43.8	0.8	4725	0.53	1	0
51	East President Street (0512078700I) / 0.97 - 1.09	1.0	42.9	1.7	10650	0.12	1	1
52	0516405070I / 0 - 0.3	1.0	42.8	0.7	4268	0.3	0	1
53	Butler Avenue (0511002600I) / 23.315 - 23.6	1.0	41.2	0.7	4665	0.285	0	1
54	0516405071I / 0.012 - 0.33	1.0	40.4	0.6	4268	0.318	0	1
55	0512078700I / 1.61 - 1.75	1.0	36.8	1.4	10650	0.14	0	1
56	0512060100I / 0 - 0.274	1.0	35.1	0.7	5690	0.274	1	0
57	Ogeechee Road (0511002500I) / 2.9 - 2.989	1.0	34.8	2.2	17700	0.089	0	1
58	0512003300I / 0 - 1.32	1.0	34.6	0.2	1199	1.32	0	1
59	East Montgomery Cross Road (0512030200I) / 1.23	1.0	33.1	2.2	18400	0.09	0	1
60	King George Boulevard (0512119700D) / 0.3062 - 0	1.0	32.5	0.6	5150	0.3276	0	1
61	Abercorn Street Extension (0511020400I) / 2.38 - 3	2.0	32.0	0.5	4080	0.84	0	2
62	Atlantic Coastal Highway (0511002500D) / 0.8935 -	3.0	31.1	1.8	15600	0.3392	0	3
63	Ogeechee Road (0511002500I) / 2.3 - 2.64	3.0	27.3	1.8	17700	0.34	0	3
64	0516975002I / 0 - 0.45	1.0	26.6	0.4	4580	0.45	0	1
65	Abercorn Street (0511020400I) / 3.22 - 3.74	1.0	25.8	0.4	4080	0.52	0	1
65	Abercorn Street Extension (0511020400I) / 1.08 - 1	1.0	25.8	0.4	4080	0.52	0	1
67	Johnny Mercer Boulevard (0512114300I) / 3.34 - 3.5	2.0	24.8	2.1	23300	0.19	0	2
68	Abercorn Street (0511020400I) / 5.96 - 7.64	6.0	23.7	0.7	8260	1.68	2	4
69	0512098200I / 0 - 2.14	1.0	21.4	0.1	1199	2.14	0	1
70	Veterans Parkway (0512097500D) / 5.7016 - 6.714	4.0	21.3	0.8	10150	1.0124	1	3
71	Smith Drive (0512077900I) / 0 - 0.23	1.0	20.7	0.9	11500	0.23	0	1
72	Ogeechee Road (0511002500I) / 5.6 - 5.94	2.0	20.7	1.2	15600	0.34	1	1
73	Ogeechee Road (0511002500I) / 3.08 - 3.23	1.0	20.6	1.3	17700	0.15	1	0
74	Quacco Road (0512077300I) / 2.14 - 2.59	2.0	20.0	0.9	12200	0.45	1	1
75	0512097500I / 6.1 - 6.374	1.0	19.7	0.7	10150	0.274	0	1

Figure 12 – Segment KSI Crash Rates (continued)

Segments							Crash Counts by Severity	
Rank	Route / MP	Crashes	Crash Rate	Crashes Per Mile	Segment AADT	Segment Length	K	A
76	Abercorn Street Extension (0512077400) / 0.94 - 1.1	1.0	19.6	0.3	4170	0.67	1	0
77	John Carter Road (0512077100) / 0.11 - 1.46	1.0	19.6	0.1	2070	1.35	1	0
78	Abercorn Street (0511020400) / 5.61 - 5.96	1.0	19.0	0.6	8260	0.35	1	0
79	Lynes Parkway (0511042100D) / 4.9148 - 5.0804	1.0	18.6	1.2	17750	0.1656	1	0
80	Lynes Parkway (0511042100D) / 4.7336 - 4.9148	1.0	17.0	1.1	17750	0.1812	0	1
81	Abercorn Street (0511020400) / 4.81 - 5.2	1.0	17.0	0.5	8260	0.39	0	1
82	East President Street (0512078700) / 0.018 - 0.24	1.0	16.8	0.9	14650	0.222	0	1
83	0511002500D / 0.157 - 0.5837	2.0	16.5	0.9	15600	0.4267	1	1
84	East Montgomery Cross Road (0512030200) / 1.32	1.0	15.7	1.1	18400	0.19	0	1
85	0512078700 / 0.49 - 0.97	2.0	15.6	0.8	14650	0.48	2	0
86	Atlantic Coastal Highway (0511002500D) / 1.2327 -	2.0	15.0	0.9	15600	0.4677	1	1
87	Abercorn Street (0511020400) / 13.582 - 13.945	3.0	14.3	1.7	31750	0.363	0	3
88	Lynes Parkway (0511042100D) / 4.3591 - 4.7336	2.0	14.1	1.1	20800	0.3745	0	2
89	Quacco Road (0512077300) / 1.81 - 2.14	1.0	13.6	0.6	12200	0.33	0	1
90	Ogeechee Road (0511002500) / 8.31 - 8.47	1.0	13.0	1.3	26300	0.16	1	0
91	Ogeechee Road (0511002600D) / 4.6658 - 4.9523	1.0	12.7	0.7	15050	0.2865	0	1
92	Quacco Road (0512077300) / 0.56 - 1.27	2.0	12.7	0.6	12200	0.71	1	1
93	Brampton Avenue (0511002500) / 0.23 - 1.34	3.0	11.7	0.5	12700	1.11	1	2
94	Ogeechee Road (0511002500) / 5.94 - 6.25	1.0	11.3	0.6	15600	0.31	1	0
95	Islands Expressway (0512078700) / 2.1 - 2.57	1.0	10.9	0.4	10650	0.47	0	1
96	0512014800 / 0.64 - 1.809	1.0	10.9	0.2	4300	1.169	0	1
97	East Montgomery Cross Road (0512030200) / 0.66	1.0	10.8	0.7	16900	0.3	0	1
98	Ogeechee Road (0511002500) / 9.36 - 9.57	1.0	10.6	1.0	24600	0.21	1	0
99	Ogeechee Road (0511002500) / 10.15 - 10.58	2.0	10.4	0.9	24600	0.43	0	2
100	Teresa Lane (0511002600D) / 0.034 - 1.1971	1.0	10.0	0.2	4725	1.1631	0	1
101	Johnny Mercer Boulevard (0512114300D) / 1.467 -	1.0	9.8	0.3	8950	0.626	1	0
102	Harry Truman Parkway (0512114800) / 3.503 - 3.79	1.0	9.7	0.7	19200	0.293	1	0
103	Abercorn Street Extension (0511020400D) / 10.932	2.0	9.7	1.1	31750	0.3546	1	1
104	Harry Truman Parkway (0512114800D) / 1.4597 - 2	2.0	9.6	0.7	18650	0.6131	1	1
105	Abercorn Street Extension (0511020400D) / 14.042	1.0	9.1	0.5	14550	0.4145	1	0
106	Diamond Causeway (05110204SPI) / 3.39 - 3.7	1.0	9.0	0.6	19600	0.31	0	1
107	Ogeechee Road (0511002500) / 8.47 - 8.71	1.0	8.7	0.8	26300	0.24	0	1
108	Abercorn Street (0511020400) / 10.472 - 10.89	2.0	8.3	1.0	31750	0.418	0	2
109	East President Street (0512078700) / 2.57 - 3.82	2.0	8.2	0.3	10650	1.25	0	2
110	Ogeechee Road (0511002500D) / 3.9409 - 5.1358	3.0	7.8	0.5	17700	1.1949	1	2
111	0512078700D / 4.3898 - 4.8743	1.0	7.7	0.4	14650	0.4845	1	0
112	Ogeechee Road (0511002500) / 5.13 - 5.6	1.0	7.5	0.4	15600	0.47	1	0
113	Abercorn Street (0511020400) / 11.16 - 11.88	3.0	7.2	0.8	31750	0.72	1	2
114	Ogeechee Road (0511002500) / 8.93 - 9.28	1.0	6.0	0.6	26300	0.35	0	1
115	Atlantic Coastal Highway (0511002500D) / 1.7052 -	1.0	6.0	0.3	15600	0.5902	0	1
116	Abercorn Street Extension (0511020400D) / 13.717	1.0	5.5	0.6	31750	0.3117	0	1
117	Butler Avenue (0511002600) / 27.14 - 31.362	4.0	5.0	0.2	10300	4.222	0	4
118	0512114300 / 4.28 - 4.75	1.0	5.0	0.4	23300	0.47	0	1
119	Abercorn Street Extension (0511020400D) / 14.456	2.0	5.0	0.3	14550	1.5151	0	2
120	0511040500D / 17.679 - 18.2757	2.0	4.8	0.7	38400	0.5967	1	1
121	Diamond Causeway (05110204SPI) / 3.9 - 4.5	1.0	4.7	0.3	19300	0.6	0	1
122	0511040500 / 1.87 - 2.48	2.0	4.7	0.7	38400	0.61	1	1
123	Diamond Causeway (05110204SPI) / 4.5 - 5.76	2.0	4.5	0.3	19300	1.26	1	1
124	Abercorn Street (0511020400) / 13.19 - 13.573	1.0	4.5	0.5	31750	0.383	0	1
125	Butler Avenue (0511002600) / 22.38 - 23.26	2.0	4.1	0.5	30100	0.88	0	2
126	Bourne Avenue (0511030700) / 7.59 - 8.49	1.0	4.1	0.2	14900	0.9	1	0
127	0511040500D / 18.2757 - 20.0751	5.0	3.9	0.6	39100	1.7994	0	5
128	East de Renne Avenue (0511020400D) / 9.6053 - 11	2.0	3.4	0.4	30950	1.0383	0	2
129	0512077200 / 1.031 - 3.64	1.0	3.2	0.1	6600	2.609	1	0
130	Abercorn Street Extension (0511020400D) / 12.620	2.0	3.1	0.4	31750	1.0969	1	1
131	Veterans Parkway (0512097500D) / 2.0521 - 5.7016	2.0	3.0	0.1	10150	3.6495	1	1
132	0512078700D / 1.2347 - 3.1281	1.0	2.7	0.1	10650	1.8934	0	1
133	0511040400 / 0 - 2.47	2.0	2.7	0.2	16450	2.47	1	1
134	Abercorn Street (0511020400) / 11.88 - 12.52	1.0	2.7	0.3	31750	0.64	0	1
135	Abercorn Street Extension (0511020400D) / 11.971	1.0	2.7	0.3	31750	0.6482	0	1
136	Abercorn Street Extension (0511020400) / 12.53 - 1	1.0	2.6	0.3	31750	0.66	0	1
137	Abercorn Street Extension (0511020400D) / 11.286	1.0	2.5	0.3	31750	0.6853	0	1
138	Abercorn Street (0511020400) / 8.53 - 10.11	1.0	2.4	0.1	14550	1.58	0	1
139	0512114800 / 2.203 - 3.503	1.0	2.2	0.2	19200	1.3	0	1
140	Abercorn Street (0511020400) / 13.945 - 14.9	1.0	1.9	0.2	30950	0.955	1	0
141	Veterans Parkway (0512097500) / 0.8 - 4.423	1.0	1.5	0.1	10150	3.623	0	1
142	0511040400D / 13.9934 - 16.3588	1.0	1.4	0.1	16450	2.3654	0	1
143	0511040500 / 2.48 - 7.12	4.0	1.2	0.2	38400	4.64	2	2
144	0511040500D / 12.9882 - 17.679	3.0	0.9	0.1	38400	4.6908	0	3
145	0511040500 / 0 - 1.87	1.0	0.7	0.1	39100	1.87	1	0

As shown in Tables 10, 11, and 12, some intersections or segments with one fatal or serious injury (KSI) crash rated higher than other intersections or segments with two or more crashes. This is primarily the result of the traffic volume at the intersection or along the corridor, i.e. the lower the traffic volume, higher the crash rate. The data was re-evaluated for intersections and segments with three or more KSI crashes or involved a pedestrian crash. Figures 13, and 14 show the re-evaluated intersections and segments with three or more KSI crashes or involved a pedestrian KSI crash.

**Figure 13 – Intersection KSI Crash Rates – Re-evaluated**

Intersections				Crash Counts by Severity		
Rank	Intersection	Inter_ID	Crashes	Crash Rate	K	A
8	0513115607I, East Montgomery Cross Road (0512030200D), East Montgomery Cross Road (0512030200I)	31811	5.0	0.1501	1	4
12	0512082400I, 0513231707D, 0513231707I, Abercorn Street Extension (0511020400I)	35503	1.0	0.1251	0	1
13	0512017200I, Butler Avenue (0511002600I), Ogeechee Road (0511002600D)	33709	6.0	0.1221	2	4
17	Liberty Parkway (0512080100D), Westlake Avenue (0512060100I)	33576	1.0	0.0915	0	1
18	0511002500D, Chevis Road (0512007600I), Ogeechee Road (0511002500I)	32006	4.0	0.0856	2	2
24	0511002500D, 0512149400D, 0512149400I, Ogeechee Road (0511002500I)	32803	4.0	0.0689	0	4
25	0512004600I, Atlantic Coastal Highway (0511002500D), Ogeechee Road (0511002500I)	33060	4.0	0.0676	0	4
26	0513231807I, Ogeechee Road (0511002500I)	34159	3.0	0.0652	0	3
35	0512084200I, Acl Boulevard (0512080100I), Liberty Parkway (0512060100I)	33543	1.0	0.0530	0	1
36	0512078100D, 0513228907I, Chatham Parkway (0512078100I), Ogeechee Road (0511002500I)	34167	4.0	0.0520	0	4
37	0511002500D, 0512004200I, Larchmont Drive (0512004200D), Ogeechee Road (0511002500I)	32533	3.0	0.0517	0	3
42	0511002500D, Ogeechee Road (0511002500I), Quacco Road (0512077300I)	32462	3.0	0.0450	0	3
51	0511020400D, 0512276300D, 0512276300I, 0513222507I, Abercorn Street (0511020400I)	32251	1.0	0.0366	0	1
52	0512006800I, Abercorn Street (0511020400I), Abercorn Street Extension (0511020400D), Don Zipperer Drive (0512119900I)	31745	4.0	0.0336	2	2
55	0512077400D, 0512147500I, Abercorn Street (0511020400I), Abercorn Street Extension (0511020400D), Abercorn Street Extn	32207	2.0	0.0322	0	2
59	0513117107I, East Montgomery Cross Road (0512030200I), Heather Wood Drive (0512045500I)	31819	1.0	0.0271	0	1
61	0512006700I, Abercorn Street (0511020400I), Abercorn Street Extension (0511020400D)	31931	3.0	0.0256	0	3
73	Ogeechee Road (0511002500I), Trailer Park Road (0512005600I)	33947	1.0	0.0204	1	0

**Figure 14 – Segment KSI Crash Rates – Re-evaluated Segments**

Rank	Route / MP	Crashes	Crash Rate	Crashes Per Mile	Segment AADT	Segment Length (Rounded)	Crash Counts by Severity	
							K	A
3	King George Boulevard (0512119700) / 0.86 - 0.963	4.0	1,076.3	7.8	1977	0.103	0	4
31	Atlantic Coastal Highway (0511002500) / 10.58 - 10.68	2.0	89.1	4.0	12300	0.1	0	2
32	Abercorn Street Extension (0511020400D) / 16.0526 - 16.1802	3.0	88.5	4.7	14550	0.1276	0	3
34	East Montgomery Cross Road (0512030200) / 1.04 - 1.12	1.0	81.1	2.5	8450	0.08	0	1
35	Atlantic Coastal Highway (0511002500D) / 3.7547 - 3.8411	2.0	71.7	4.6	17700	0.0864	0	2
36	East Montgomery Cross Road (0512030200D) / 0 - 0.1061	1.0	61.1	1.9	8450	0.1061	0	1
38	Abercorn Street (0511020400) / 8.32 - 8.45	2.0	57.9	3.1	14550	0.13	0	2
41	Fort Argyle Road (0511020400) / 1.6 - 1.86	1.0	51.7	0.8	4080	0.26	0	1
48	Diamond Causeway (05110204SPI) / 2.717 - 2.84	1.0	45.5	1.6	9800	0.123	0	1
51	East President Street (0512078700) / 0.97 - 1.09	1.0	42.9	1.7	10650	0.12	1	0
56	0512060100 / 0 - 0.274	1.0	35.1	0.7	5690	0.274	1	0
57	Ogeechee Road (0511002500) / 2.9 - 2.989	1.0	34.8	2.2	17700	0.089	0	1
59	East Montgomery Cross Road (0512030200) / 1.23 - 1.32	1.0	33.1	2.2	18400	0.09	0	1
60	King George Boulevard (0512119700D) / 0.3062 - 0.6338	1.0	32.5	0.6	5150	0.3276	0	1
62	Atlantic Coastal Highway (0511002500D) / 0.8935 - 1.2327	3.0	31.1	1.8	15600	0.3392	0	3
63	Ogeechee Road (0511002500) / 2.3 - 2.64	3.0	27.3	1.8	17700	0.34	0	3
65	Abercorn Street (0511020400) / 3.22 - 3.74	1.0	25.8	0.4	4080	0.52	0	1
68	Abercorn Street (0511020400) / 5.96 - 7.64	6.0	23.7	0.7	8260	1.68	2	4
70	Veterans Parkway (0512097500D) / 5.7016 - 6.714	4.0	21.3	0.8	10150	1.0124	1	3
73	Ogeechee Road (0511002500) / 3.08 - 3.23	1.0	20.6	1.3	17700	0.15	1	0
85	0512078700 / 0.49 - 0.97	2.0	15.6	0.8	14650	0.48	2	0
87	Abercorn Street (0511020400) / 13.582 - 13.945	3.0	14.3	1.7	31750	0.363	0	3
90	Ogeechee Road (0511002500) / 8.31 - 8.47	1.0	13.0	1.3	26300	0.16	1	0
93	Brampton Avenue (0511002500) / 0.23 - 1.34	3.0	11.7	0.5	12700	1.11	1	2
97	East Montgomery Cross Road (0512030200) / 0.66 - 0.96	1.0	10.8	0.7	16900	0.3	0	1
99	Ogeechee Road (0511002500) / 10.15 - 10.58	2.0	10.4	0.9	24600	0.43	0	2
102	Harry Truman Parkway (0512114800) / 3.503 - 3.796	1.0	9.7	0.7	19200	0.293	1	0
104	Harry Truman Parkway (0512114800D) / 1.4597 - 2.0728	2.0	9.6	0.7	18650	0.6131	1	1
105	Abercorn Street Extension (0511020400D) / 14.042 - 14.4565	1.0	9.1	0.5	14550	0.4145	1	0
107	Ogeechee Road (0511002500) / 8.47 - 8.71	1.0	8.7	0.8	26300	0.24	0	1
108	Abercorn Street (0511020400) / 10.472 - 10.89	2.0	8.3	1.0	31750	0.418	0	2
110	Ogeechee Road (0511002500D) / 3.9409 - 5.1358	3.0	7.8	0.5	17700	1.1949	1	2
113	Abercorn Street (0511020400) / 11.16 - 11.88	3.0	7.2	0.8	31750	0.72	1	2
116	Abercorn Street Extension (0511020400D) / 13.717 - 14.0287	1.0	5.5	0.6	31750	0.3117	0	1
117	Butler Avenue (0511002600) / 27.14 - 31.362	4.0	5.0	0.2	10300	4.222	0	4
127	0511040500D / 18.2757 - 20.0751	5.0	3.9	0.6	39100	1.7994	0	5
143	0511040500 / 2.48 - 7.12	4.0	1.2	0.2	38400	4.64	2	2
144	0511040500D / 12.9882 - 17.679	3.0	0.9	0.1	38400	4.6908	0	3

From the re-evaluation of the intersections and segments, the intersections and segments selected for further review are shown listed below:

**Intersections:**

- US 17/SR 25 (Ogeechee Road) at Chevis Road,
- US 17/US 25 (Ogeechee Road) at Berwick Boulevard,
- US 17/SR 25 (Ogeechee Road) at Cottonvale Trail,
- US 17/SR 25 (Ogeechee Road) at Mersey Way,
- US 17/SR 25 (Ogeechee Road) at Chatham Parkway,
- US 17/SR 25 (Ogeechee Road) at Larchmont Drive,
- US 17/SR 25 (Ogeechee Road) at Quacco Road,
- US 17/SR 25 (Ogeechee Road) at Ridge Road (includes pedestrian crash and segment),
- SR 204 (Fort Argyle Road) at Highgate Boulevard (includes pedestrian crash and segment),
- SR 204 (Abercorn Street) at W Gateway Boulevard (includes pedestrian crash and segment),
- SR 204 (Abercorn Street) at Don Zipperer Drive/Sweetwater Station Drive,
- SR 204 (Abercorn Street) at E Gateway Boulevard (includes pedestrian crash and segment),
- SR 204 (Abercorn Street) at Ford Avenue,

- ACL Boulevard at Westlake Avenue/Liberty Parkway (includes pedestrian crash and segment),
- E. Montgomery Cross Road at Varnedoe Drive (includes segment),
- E. Montgomery Cross Road at Sallie Mood Drive/Heatherwood Drive (includes pedestrian crash and segment), and
- US 80 (Islands Expressway) at Bryan Woods Road.

Segments:

- US 17/SR 25 (Ogeechee Road) between Blossom Drive and I-516 ramps,
- US 17/SR 25 (Ogeechee Road) between Azalea Plaza and Ridge Road,
- US 17/SR 25 (Ogeechee Road) between Canebrake Road and Little Neck Road,
- US 17/SR 25 (Ogeechee Road at SR 204 (Abercorn Street) interchange,
- US 17/SR 25 (Ogeechee Road) between Chief of Love Road and Bradley Boulevard,
- US 17/SR 25 (Ogeechee Road) at SR 204 (Abercorn Street) interchange,
- SR 204 (Fort Argyle Road/Abercorn Street) between W Gateway Boulevard and E Gateway Boulevard,
- SR 204 (Fort Argyle Road) between Highgate Boulevard and Canvasback Drive,
- SR 204 (Fort Argyle Road) between Bush Road and Arkwright Lane,
- SR 204 (Abercorn Street) at Veterans Parkway interchange,
- SR 204 (Abercorn Street) between Ford Avenue and Sweetwater Station Drive,
- US 80 (Islands Expressway) between Johnny Mercer Boulevard and Fort Pulaski Road,
- Truman Parkway at Montgomery Cross Road interchange,
- Truman Parkway at Whitefield Avenue interchange,
- E. Montgomery Cross Road between Sallie Mood Drive/Heatherwood Drive and Gladstone Street,
- E. President Street between Dulany Road and Pennsylvania Avenue,
- Liberty Parkway between Westlake Avenue and I-516,
- King George Boulevard between Mariners Way and SR 204 (Abercorn Street) ramps, and
- King George Boulevard between Red Fox Drive and Grove Point Road.

Figure 15 shows the selected intersections and segments for further review within unincorporated Chatham County. The Safe Streets for All (SS4A) Initiative emphasizes equity considerations including identifying underserved areas within the study area in the development of the Safety Action Plan. Per direction provided by the Steering Group, the US Department of Transportation’s (DOT) Equitable Transportation Community (ETC) Explorer database was reviewed to determine the underserved areas within Chatham County.

*\*The ETC Explorer database is an interactive web application that uses 2020 Census Tracts and data, to explore the cumulative burden communities experience, as a result of underinvestment in transportation, in the following five components: Transportation Insecurity, Climate and Disaster Risk Burden, Environmental Burden, Health Vulnerability, and Social Vulnerability. It is designed to complement the White House Council on Environmental Quality (CEQ) climate & Economic Justice Screening tool (CEJST) by providing users deeper insight into Transportation disadvantage component of CEJST, and the ETC Explorer’s Transportation Insecurity component, which will help the benefits of DOT’s investment are addressing transportation related causes of disadvantage.*

*\*Transportation Insecurity is a key component of transportation disadvantage. It occurs when people are unable to get to where they need to go to meet the needs of their daily life regularly, reliably, and safely. Nationally, there are well-established policies and programs that aim to address food insecurity and housing insecurity, but not transportation insecurity. DOT is working to change that as a growing body of research indicates that transportation insecurity is a significant factor in persistent poverty.*

- *Transportation Access - Overall, this indicator provides a view of transportation challenges faced by communities and their impact on well-being and opportunities. Long commute times and limited access to personal vehicles can create significant barriers to employment, while high walkability and frequent public transit options can provide greater access to employment and resources.*
- *Transportation Cost Burden - Transportation cost burden measures the percent of income a household spends on transportation. USDOT measures transportation cost burden by calculating the primary costs associated with a household means of transportation: auto ownership & operating costs, transit costs, and commuting time costs.*
- *Transportation Safety - Measuring transportation safety is crucial in understanding transportation insecurity by highlighting areas that are disadvantaged due to unsafe conditions and high crash rates, which can be improved through additional or improved infrastructure and safety measures.*

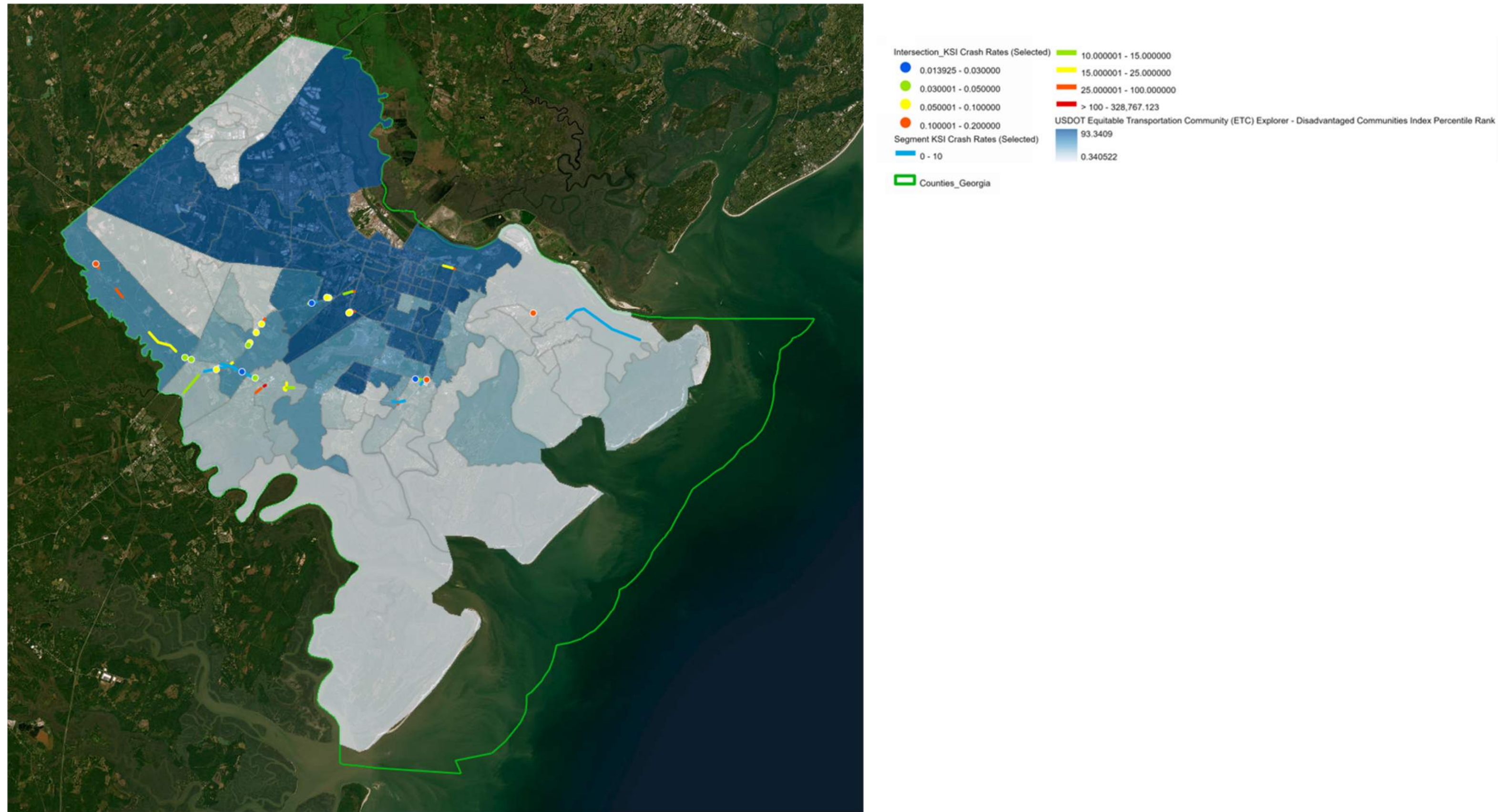
\* - [Justice40 Initiative | US Department of Transportation](#) website

Figure 16 shows the selected intersections and segments for further review within unincorporated Chatham County in relation to the underserved areas.

Figure 15 – Selected Intersections and Segments



Figure 16 – Selected Intersections and Segments with Underserved Areas





## 5. ON-GOING PROJECTS

Chatham County has several on-going and recently completed projects that will or have addressed safety concerns with unincorporated Chatham County. These projects were initiated prior to the Safe Streets for All (S4A) Initiative. As part of preparing the Safety Action Plan, these on-going and completed projects will be reviewed in determining whether the list of intersections and segments selected in the safety analysis needs to be revised.

The following are the completed and future construction projects provided by Chatham County:

### Completed Construction Projects:

- Johnny Mercer Boulevard Corridor Improvements (Completed December 2022). Installation of new traffic signals at the intersection of Johnny Mercer Boulevard at CVS/Walgreens, Wilmington Village Way and Penn Waller Road, along with sidewalk construction and updated signing and marking.
- McCorkle Trail (Completed 2023). Resurfaced the McCorkle Bike trail.
- Lansing Avenue Traffic Calming (Completed 2023). Installed traffic calming in the way of speed humps.
- Willow Lakes Road Rehabilitation and Drainage Improvements. Updated drainage facilities and resurfaced entire Willow Lakes subdivision.

### Future Construction Projects:

- Johnny Mercer at Lyman Hall Intersection Improvement. Installing a traffic signal, pedestrian signal, and flashing beacon for the US-80 approach.
- Skidaway Road Improvement (2025 Construction). This project includes an upgrade of the existing traffic signal, drainage and sidewalks on both sides of Skidaway Road.
- Quacco Road Widening (2024 Construction). Widening Quacco Road to four lanes.
- US 80 Sidewalks (2024 Construction). Sidewalks along the south side of US-80 from Johnny Mercer Boulevard to Whitemarsh Island Road.
- Islands Expressway at Oatland Island – Construction dependent on Islands Expressway Bridge Completion. Project will shift the connection between Islands Expressway and Oatland Island Road on the north side and add turn lanes to improve the function and safety of the intersection.
- I-16/Little Neck/Jimmy Deloach Interchange (Construction 2026). GDOT PI 0017515. Constructing a DDI at the interchange and a roundabout at Little Neck and John Carter Road.
- Little Neck Road Reconstruction (Construction 2025). Improvements at Little Neck Road and U.S. 17. Widening to 4 lanes from US 17 to Al Henderson Boulevard. Reconstructing the road from Al Henderson to I-95 overpass. Pedestrian facilities included.
- Walthour Road Slope Stabilization (Construction 2025). Resiliency project to improve the causeway.
- Johnny Mercer at Walthour Intersection Improvements (Construction 2025). Roundabout at the named intersection.
  - Green Island Road Trail (Construction 2026). Pedestrian facilities along Green Island Road from Lufburrow Way to Diamond Causeway.

- Chevis Road Improvement Project (Construction 2026). Pedestrian and bicycle accommodations with intersection improvements along Chevis Road from US 17 to Wild Heron Road.
- Garrard Avenue Improvements (Construction 2026). Safety and pedestrian improvements from Lane Avenue to Chatham Parkway. Includes a roundabout at Garrard Avenue and Chatham Parkway.
- SR 26/US 80 at Lazaretto Creek - PI 0017415 (Construction anticipated 2025). This project proposes the Replacement and widening of the existing bridge over Lazeretto Creek. Proposed additional shoulders, and barrier wall, for safety and to accommodate pedestrian and bicycle traffic. This route is the only access to Tybee Island and serves as the only hurricane and emergency route.
- SR 26/US 80 at Bull River - PI 0017414 (Construction anticipated 2025). This project proposes the Replacement and widening of the existing bridge over Bull River. Proposed additional shoulders, and barrier wall, for safety and to accommodate pedestrian and bicycle traffic. This route is the only access to Tybee Island and serves as the only hurricane and emergency route.

In addition to the construction projects, Chatham County has several on-going studies to address safety. Georgia Department of Transportation also has projects within Chatham County. The following are the on-going projects provided by Chatham County:

On-going/Current Studies:

- SR 25 Corridor Study. This study will evaluate the existing and future capacity, operation and safety of U.S. 17/ State Route 25/ Ogeechee Road between the Ogeechee River (County line) and I-516. The goal of the study is to identify and prioritize short-term and long-term improvements.
- State Route 204 Study. This Study will evaluate the operation and safety of State Route 204/ Abercorn Street between US 17 and King George Boulevard. It will also look at alternative access options at Ford Avenue, Pine Grove Drive and Don Zipperer Road.
- President Street Railroad Crossing Elimination Study. This study will evaluate the existing and future traffic volumes and needs and the operation and safety conditions of the interchange to develop alternatives and costs to eliminate the at-grade railroad crossing.

Other Proposed GDOT Projects:

- Roundabout at SR 204 (Fort Argyle Road) and Old River Road.
- Restricted Crossing U-turn (RCUT) intersection at US 17/SR 25 (Ogeechee Road) and Derrick Inn Road.
- RCUT intersection at US 17/SR 25 (Ogeechee Road) and Burton Road.